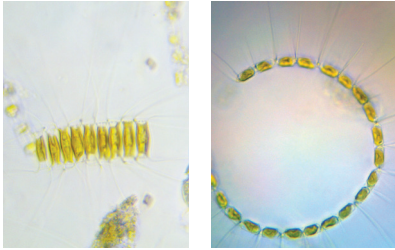


IDENTIFICATION GUIDE

Prepared by Andrew Bigham and Deanna Frankowski (2007) (Rev. 2020)

* Potentially hazardous algal bloom (HAB) and Phytoplankton Monitoring Network target.

DIATOMS



Chaetoceros sp.*

Square shaped cells with spines at each corner; often seen in chains



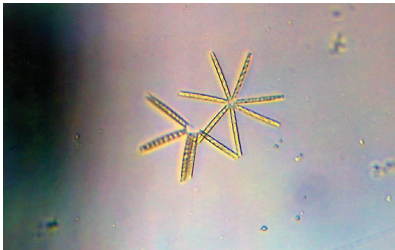
Odontella sp.

Rectangular shaped cell with projections off each corner; may form chains



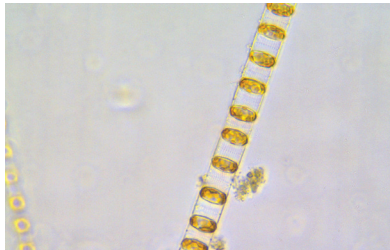
Pleurosigma sp.

Elongated cell, tapered at ends; normally orange or clear; often seen moving



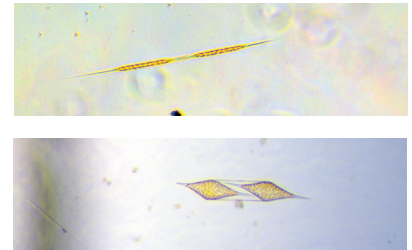
Thalassionema sp.

Single, rod-like cells that may form chains



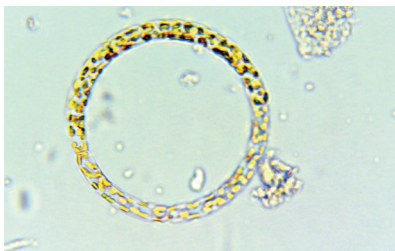
Skeletonema sp.

Small cells evenly spaced in chains



Rhizosolenia sp.

Elongated cell with projections at each end; may have multiple chloroplasts



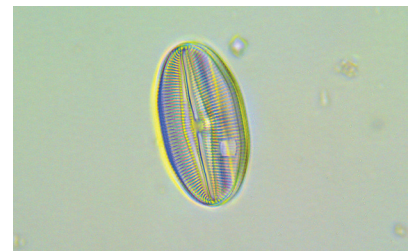
Guinardia sp.

Chain of cells that can be arched; each cell has multiple chloroplasts



Ditylum sp.

Cell has multiple chloroplasts and a long spine at each end



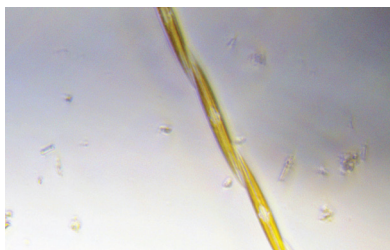
Navicula sp.

Related to Pleurosigma but much smaller; often seen moving



Prorocentrum*

“bean shaped” or rounded, flattened cell with dent on the top, with or without an apical spine.



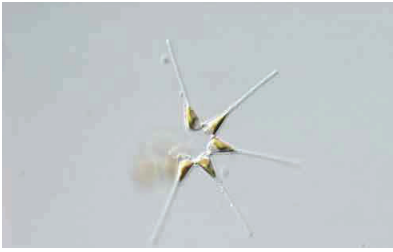
Pseudo-nitzschia sp.*

Cells look like grains of rice; cells form a rigid chain that looks like inclining stairs



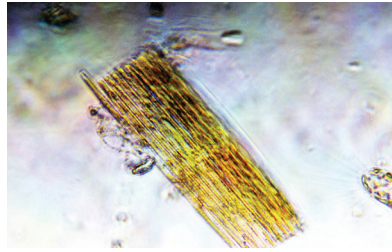
Triceratium

rigid triangular shaped diatom with well defined pores.



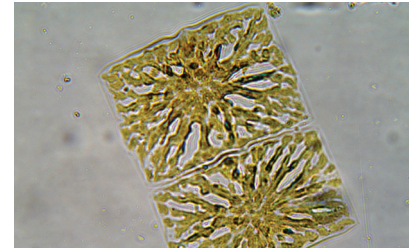
Asterionellopsis

Single cells, or cells may form star-shaped colonies by uniting at base



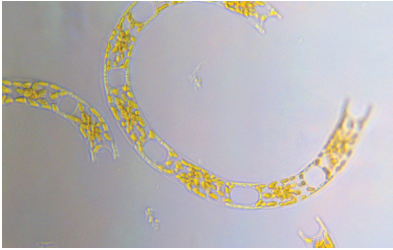
Bacillaria sp.

Rectangular cells in inclining chains; moves in and out like an accordion



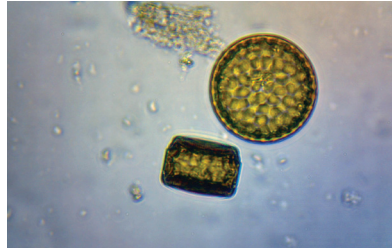
Striatella sp

Rectangular shape and starburst patterned chloroplasts. Found as single cells or small groups.



Eucampia sp.

Arched elliptical chains of cells connected by two projections



Coscinodiscus sp.

Spherical cell; may have a dark band around the edge and a dark center



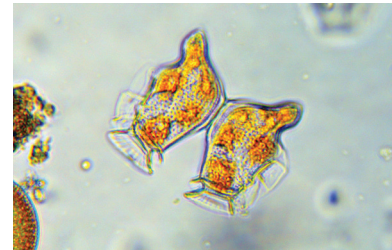
Nitzschia sp.

Long, oval cell with two projections; very small cells that move in straight line

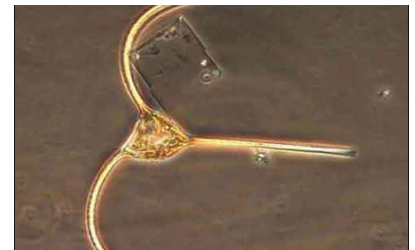
DINOFLAGELLATES



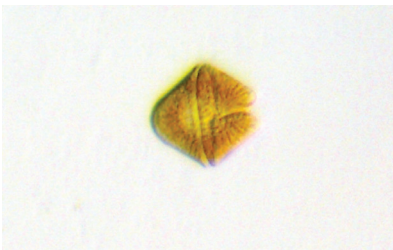
Ceratium furca (phenotype)*
"Forked Horns" Three horns: one elongated anterior and two unequal posterior horns.



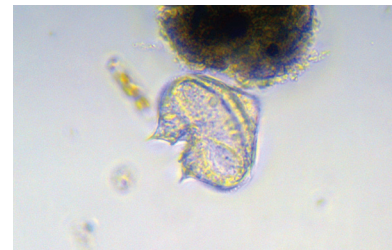
Dinophysis spp.*
"The evil princess" wide rounded bottom, a handle-like wing on one side and flared "crown"



Ceratium longipes
Cell with three long pipes radiating from a central disc



Akashiwo sanguinea*
Flat, tooth-like shape, often orangish in color



Protoperidinium sp.
Turnip-shaped cell that moves like a spinning top